

Автомобильные реле серии FBR51, FBR52 Технические характеристики

Архангельск (8182)63-90-72	Ижевск (3412)26-03-58	Магнитогорск (3519)55-03-13	Пермь (342)205-81-47	Сургут (3462)77-98-35
Астана (7172)727-132	Иркутск (395)279-98-46	Москва (495)268-04-70	Ростов-на-Дону (863)308-18-15	Тверь (4822)63-31-35
Астрахань (8512)99-46-04	Казань (843)206-01-48	Мурманск (8152)59-64-93	Рязань (4912)46-61-64	Томск (3822)98-41-53
Барнаул (3852)73-04-60	Калининград (4012)72-03-81	Набережные Челны (8552)20-53-41	Самара (846)206-03-16	Тула (4872)74-02-29
Белгород (4722)40-23-64	Калуга (4842)92-23-67	Нижний Новгород (831)429-08-12	Санкт-Петербург (812)309-46-40	Тюмень (3452)66-21-18
Брянск (4832)59-03-52	Кемерово (3842)65-04-62	Новокузнецк (3843)20-46-81	Саратов (845)249-38-78	Ульяновск (8422)24-23-59
Владивосток (423)249-28-31	Киров (8332)68-02-04	Новосибирск (383)227-86-73	Севастополь (8692)22-31-93	Уфа (347)229-48-12
Волгоград (844)278-03-48	Краснодар (861)203-40-90	Омск (3812)21-46-40	Симферополь (3652)67-13-56	Хабаровск (4212)92-98-04
Вологда (8172)26-41-59	Красноярск (391)204-63-61	Орел (4862)44-53-42	Смоленск (4812)29-41-54	Челябинск (351)202-03-61
Воронеж (473)204-51-73	Курск (4712)77-13-04	Оренбург (3532)37-68-04	Сочи (862)225-72-31	Череповец (8202)49-02-64
Екатеринбург (343)384-55-89	Липецк (4742)52-20-81	Пенза (8412)22-31-16	Ставрополь (8652)20-65-13	Ярославль (4852)69-52-93
Иваново (4932)77-34-06	Киргизия (996)312-96-26-47	Казахстан (772)734-952-31	Таджикистан (992)427-82-92-69	

Единый адрес для всех регионов: fst@nt-rt.ru || www.fujitsu.nt-rt.ru

COMPACT POWER RELAY

1 POLE—30 A

(FOR AUTOMOTIVE APPLICATIONS)

FBR51, 52 SERIES

■ FEATURES

- Compact and lightweight structure
(42% of the volume of the FBR160 relay)
- High current contact capacity
(carrying current: 35 A/10 minutes, 25 A/1 hour)
- High resistance to vibration and shock
- Improved heat resistance and extended operation range
- Two contact gap options
(FBR51: 0.3 mm, FBR52: 0.6 mm)
- Three types of contact material



■ ORDERING INFORMATION

[Example] FBR51 N D12 - W1 **
 (a) (b) (c) (d) (e)

(a)	Series Name	FBR51 : Standard type (contact gap 0.3 mm) FBR52 : Wider contact gap type (contact gap 0.6 mm)
(b)	Enclosure	N : Plastic sealed type
(c)	Nominal Voltage	D06 : 6 VDC D09 : 9 VDC D10 : 10 VDC D12 : 12 VDC
(d)	Contact Material	W1 : Silver-tin oxide indium (high power type) WL : Silver-tin oxide indium (lamp loads, see applications table) WF : Silver-tin oxide indium (flasher loads)
(e)	Custom Designation	To be assigned custom specification

FBR51, 52 SERIES

■ SPECIFICATIONS

Item		Specifications		
		W1 contact	WL contact	WF contact
Contact	Arrangement	1 form C	1 form A (SPST)	1 form A (SPST)
	Material	Silver-tin oxide indium (high power type)	Silver-tin oxide indium	Silver-tin oxide indium
	Voltage Drop (resistance)	Maximum 100mV (at 1A 12 VDC)		
	Rating	14 VDC 25 A (motor free load)	120 Watt lamp at 14 VDC	80 Watt lamp at 14 VDC
	Maximum Carrying Current	35A / 10 minutos, 10A / 1hr (25°C, 100% rated coil voltage)		
	Maximum Inrush Current (reference)	60 A	80 A	
	Max. Switching Current (reference)	35 A 16 VDC		
	Min. Switching Load*1 (reference)	6 VDC 1A		
Coil	Operating Temperature Range	-40°C to +85°C (no frost)		
	Storage Temperature Range	-40°C to +100°C (no frost)		
Time Value	Operate (at nominal voltage)	Maximum 10ms		
	Release (at nominal voltage)	Maximum 5ms		
Life	Mechanical	10 x 10 ⁶ operations minimum		
	Electrical	2 x 10 ⁵ ops min. 14 VDC 25A Locked motor load	1.0 x 10 ⁵ ops min. 115 Watts lamp, 14 VDC	2.5 x 10 ⁶ ops min. Inrush 11A 14VDC (0.35 sec - ON / 0.35 sec - OFF)
Other	Vibrations Resistance	10 to 55 Hz (double amplitude of 1.5mm)		
	Shock Resistance	Misoperation	10m/s ²	
		Endurance	1,000 m/s ²	
	Weight	Approximately 6g		

*1 Values when switching a resistive load at normal room temperature and humidity and in a clean environment. The minimum switching load varies with the switching frequency and operating environment.

FBR51, 52 SERIES

■ COIL DATA CHART

1. FBR51 Series

Model			Nominal Voltage	Coil resistance ($\pm 10\%$) (at 20°C)	Must operate voltage	Thermal resistance
W 1 contact	WL Contact	WF contact				
FBR51ND06-W1	FBR51ND06-WL	FBR51ND06-WF	6 VDC	60	3.6VDC (at 20°C) 4.5VDC (at 80°C)	73°C/W
FBR51ND09-W1	FBR51ND09-WL	FBR51ND09-WF	9 VDC	135	5.4VDC (at 20°C) 6.8VDC (at 80°C)	
FBR51ND10-W1	FBR51ND10-WL	FBR51ND10-WF	10 VDC	180	6.3VDC (at 20°C) 7.9VDC (at 80°C)	
FBR51ND12-W1	FBR51ND12-WL	FBR51ND12-WF	12 VDC	240	7.3VDC (at 20°C) 9.2VDC (at 80°C)	

2. FBR52 Series

MODEL	Nominal voltage	Coil resistance ($\pm 10\%$) (at 20°C)	Must operate voltage	Thermal resistance
W1 contact				
FBR52ND06-W1	6 VDC	45 Ω	3.6 VDC (at 20°C) 4.5 VDC (at 85°C)	65°C/W
FBR52ND09-W1	9 VDC	100 Ω	5.4 VDC (at 20°C) 6.8 VDC (at 85°C)	
FBR52ND10-W1	10 VDC	135 Ω	6.3 VDC (at 20°C) 7.9 VDC (at 85°C)	
FBR52ND12-W1	12 VDC	180 Ω	7.3 VDC (at 20°C) 9.2 VDC (at 85°C)	

FBR51, 52 SERIES

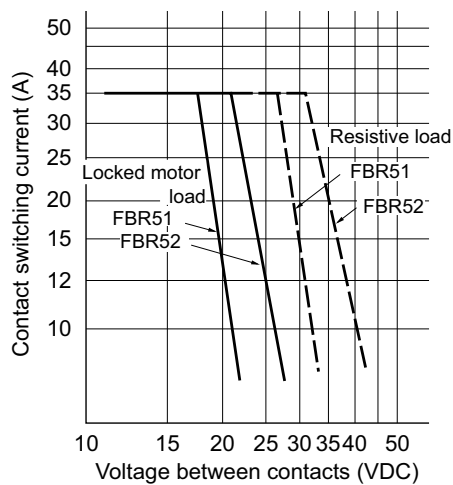
■ SUITABLE APPLICATIONS

Application	Normal load current (12 VDC system)	Description	Recommended model (example)	
			For 16 V or less motor load voltage	For instantaneous 20 V or more load voltage
Power Windows	20 to 25 A (switching at motor locking)	forward and reverse motor control	FBR51N□ -W1	FBR52N□ -W1
Automatic Door Lock	18 to 25 A (switching at motor locking)	forward and reverse motor control	FBR51N□ -W1	FBR52N□ -W1
Tilt-Lock Wheel	20 A (switching at motor locking)	forward and reverse motor control	FBR51N _n -W1	FBR52N _n -W1
Sunroof	20 to 30 A (switching at motor locking)	forward and reverse motor control	FBR51N □ -W1	FBR52N □ -W1
Adjustable Door Mirror	3 to 5 A (switching at motor locking)	forward and reverse motor control	FBR51N □ -W1	
Automatic Antenna	8 to 12 A (INRUSH) break 2 A maximum (motor-free)	forward and reverse motor control	FBR51N□ -W1	
Auto-Cruise	2 to 3 A	power shutoff and solenoid	FBR51N□-W1	
Lamp loads	120 Watts	for up to 100K operations	FBR51N□-WL	
Others	Car Audio System, etc.		FBR51N□-W1	

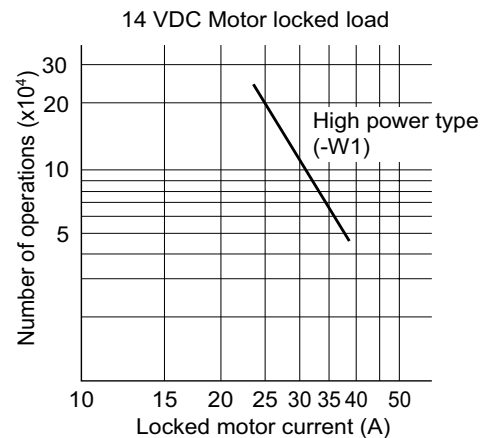
- For the load condition where higher voltage would be encountered during contact break, FBR52 series with wider contact gap is recommended.

■ CHARACTERISTIC DATA

1. MAXIMUM BREAK CAPACITY



2. LIFE

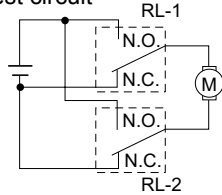


FBR51, 52 SERIES

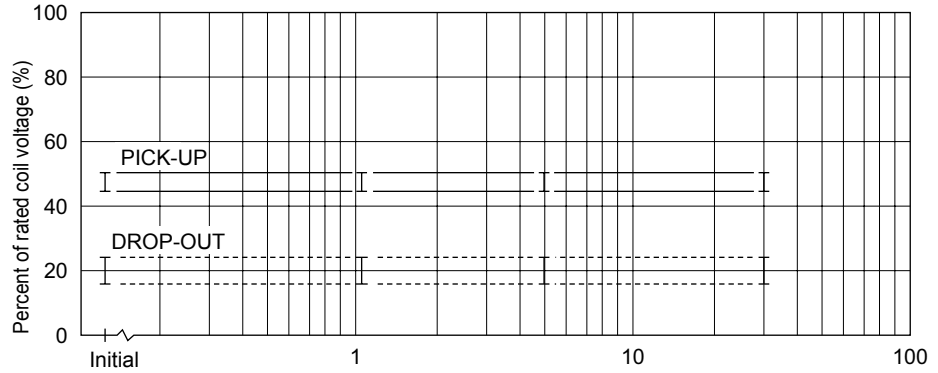
3. LIFE TEST (EXAMPLE)

- Test item
14 V DC-20 A
motor lock 200,000
operations minimum
(FBR52□-W1 type)

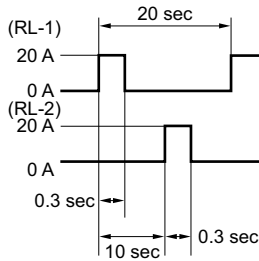
- Test circuit



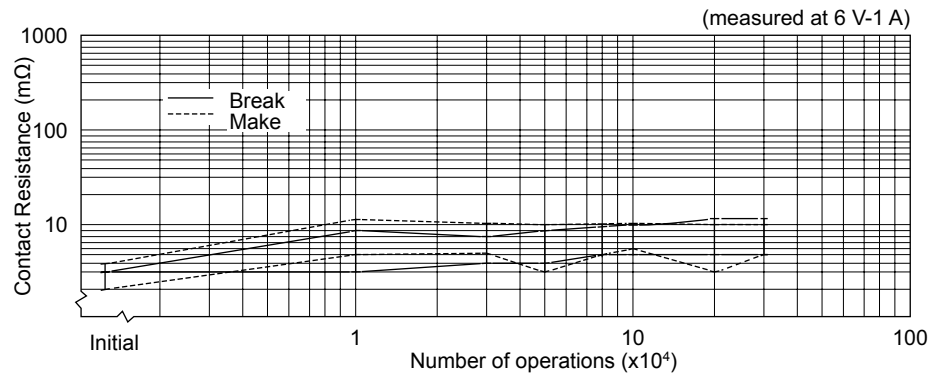
- Shift of pick-up drop-out voltage



- Current wave form

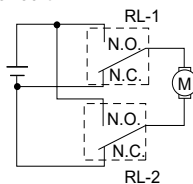


- Shift of contact resistance

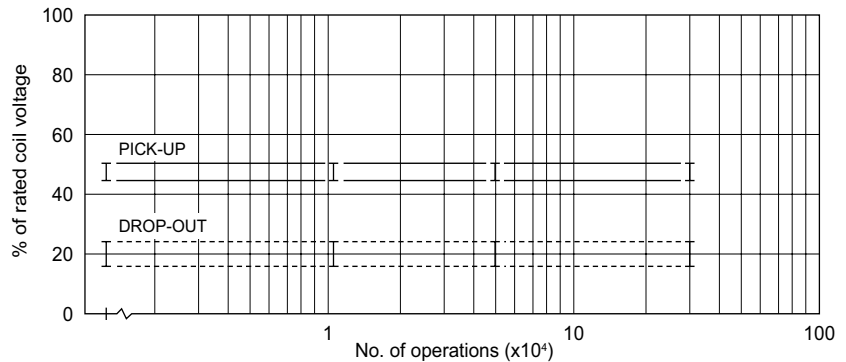


- Test item
14 V DC-25 A
Motor lock
200,000 operations minimum
(FBR51 □-W1 type)

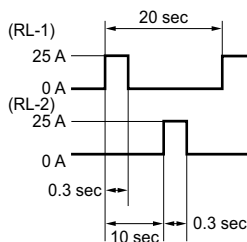
- Test circuit



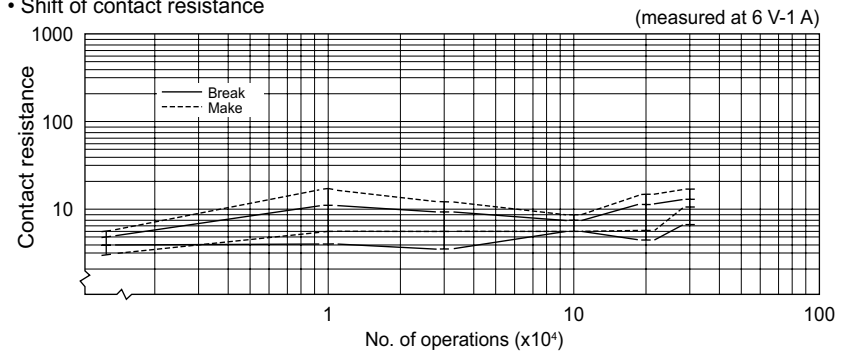
- Shift of pick-up and drop-out voltage



- Current wave form



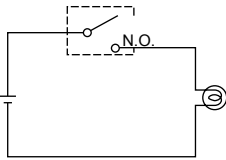
- Shift of contact resistance



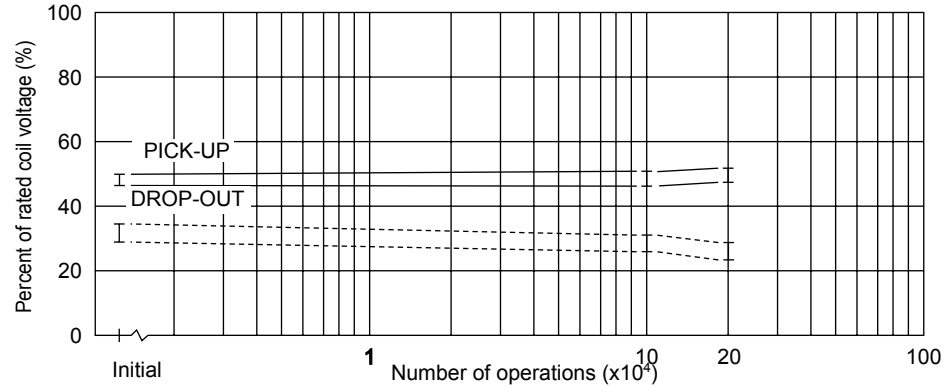
FBR51, 52 SERIES

- Test item
14 V DC-80 A (120W)
lamp load 100,000
operations minimum
(FBR51_n-WL type)

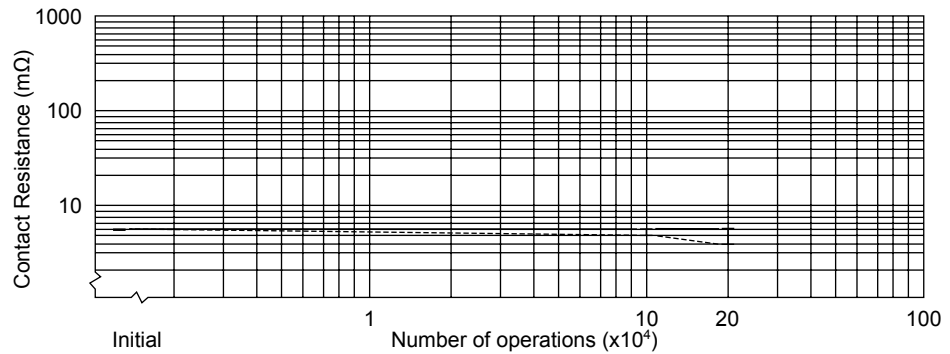
- Test circuit



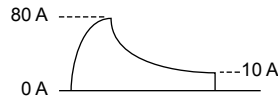
- Shift of pick-up drop-out voltage



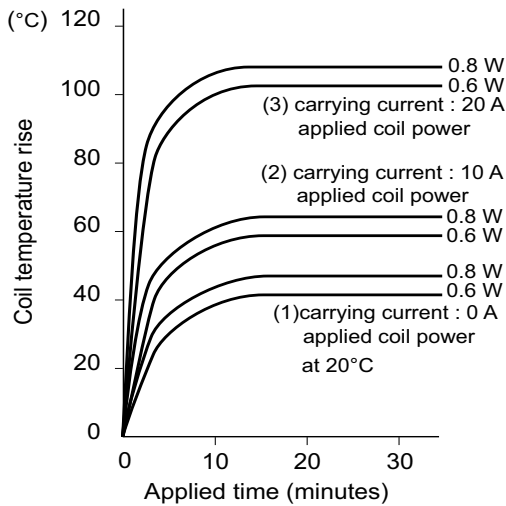
- Shift of contact resistance



- Current wave form



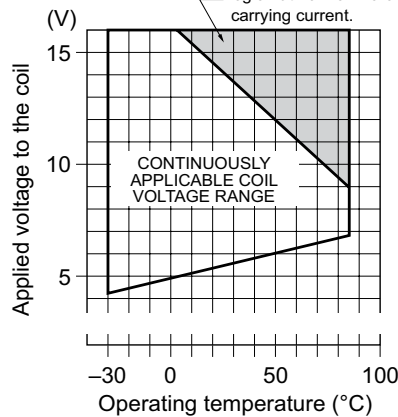
4. COIL TEMPERATURE RISE



5. OPERATING COIL VOLTAGE RANGE (EXAMPLE)

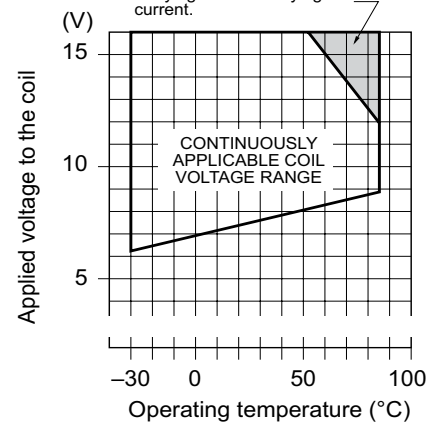
[FBR51ND09-□]

NOTE : Intermittent coil operation is required in this region at 20 A or more carrying current.



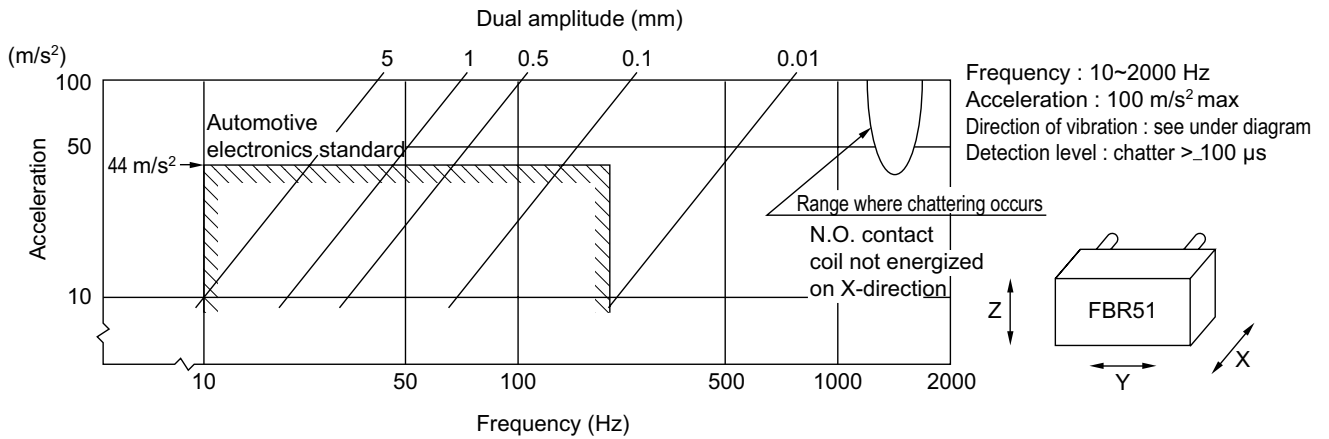
[FBR51ND12-□]

NOTE : Intermittent coil operation is required in this region at 20 A or more carrying current carrying current.

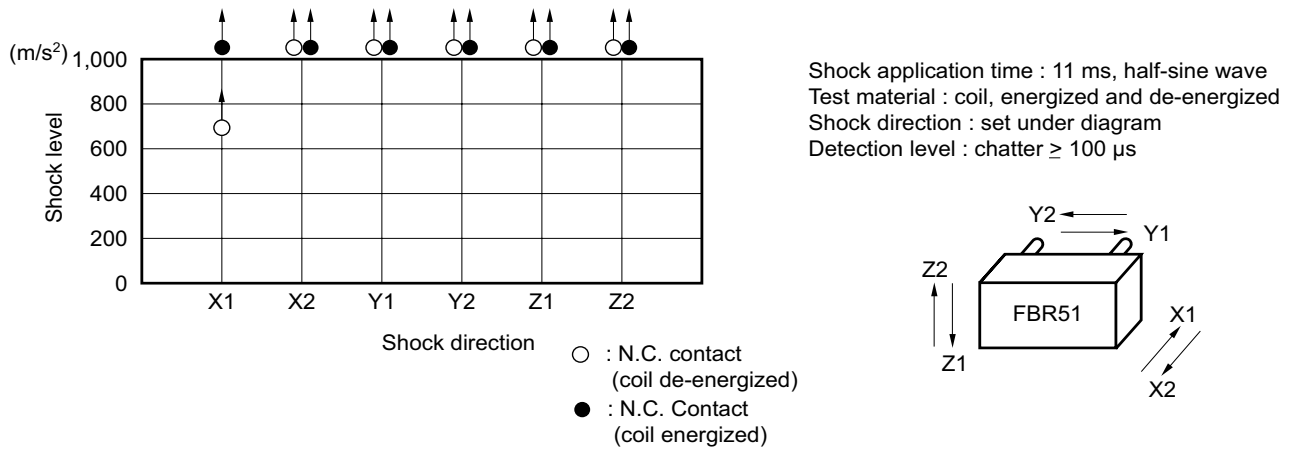


FBR51, 52 SERIES

6. VIBRATION RESISTANCE CHARACTERISTICS



7. SHOCK RESISTANCE CHARACTERISTICS



REFERENCE DATA

